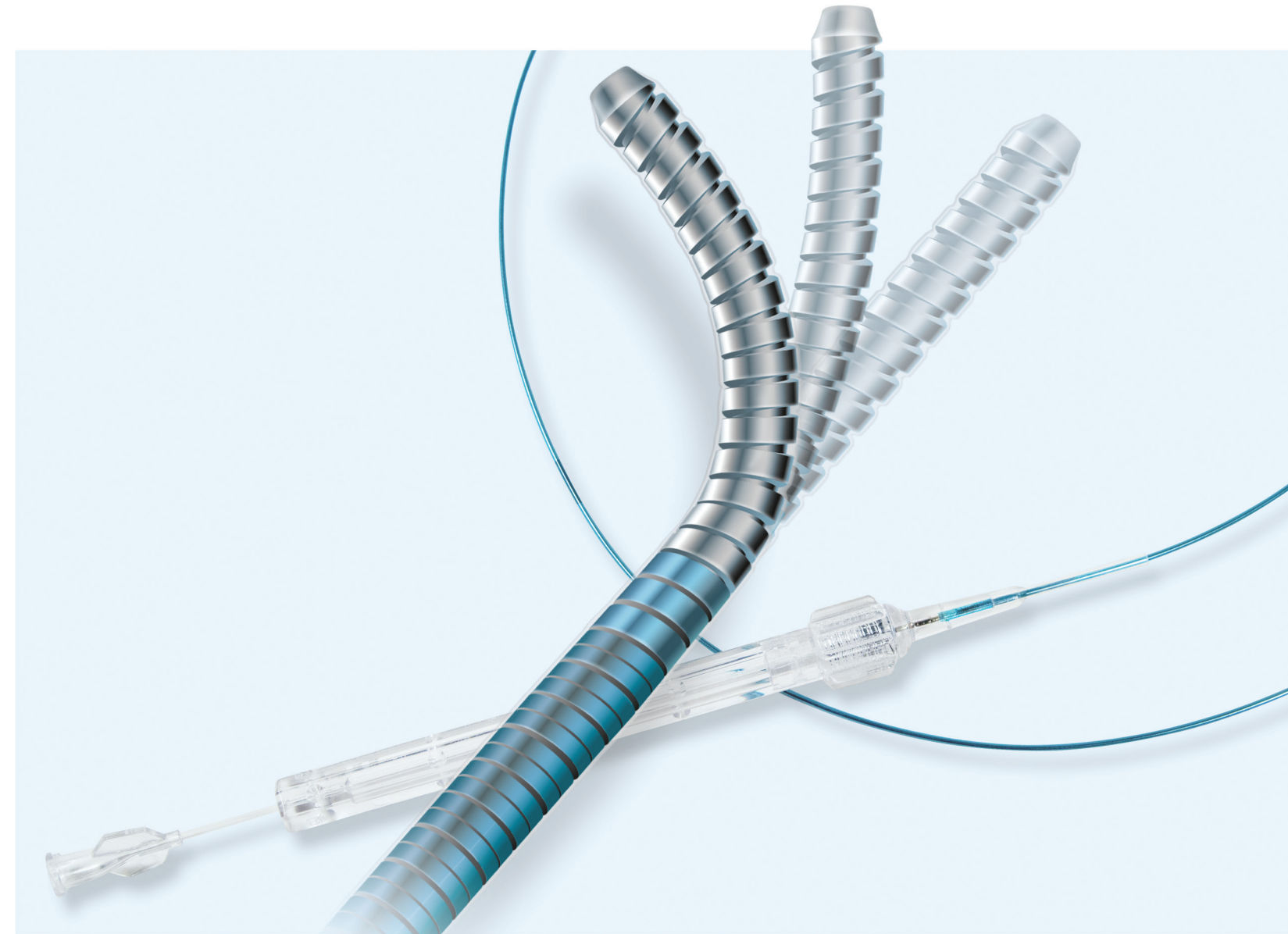
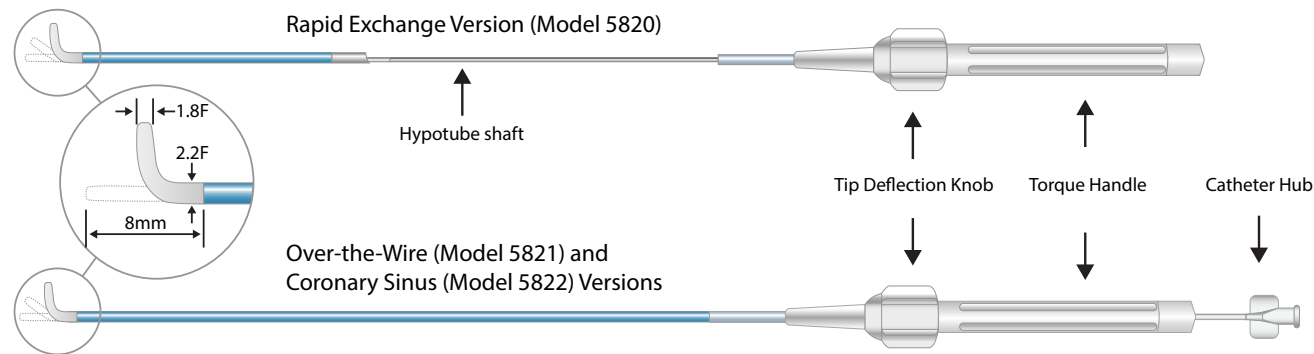




The Venture catheters are indicated for directing, steering, controlling, and supporting a guidewire to access discrete regions of the coronary and peripheral vasculature. The Venture OTW and Venture CS catheters may also be used for manual delivery of saline solution or diagnostic contrast agents.

Model	Guidewire Compatibility	Guide Catheter Compatibility	Working Length	Rapid Exchange Segment	Radiopaque Tip	Hydrophilic Coating	Distal Tip Entry Profile	Deflectable Tip O.D.	Proximal O.D. / Transition Collar O.D. (RX)	I.D.	Box Quantity
5820 - Rapid Exchange (RX)	0.014"	6F (1.7mm)	145cm	30cm	8mm	Distal 24cm	1.8F 0.61mm / 0.024"	2.2F 0.74mm / 0.029"	4.1F 1.37mm / 0.054"	0.018" (0.46mm)	1
5821 - Over-the-Wire (OTW)	0.014"	6F (1.7mm)	140cm	N/A	8mm	Distal 45cm	1.8F 0.61mm / 0.024"	2.2F 0.74mm / 0.029"	4F 1.32mm / 0.052"	0.018" (0.46mm)	1
5822 - Coronary Sinus (CS)	0.014"	6F (1.7mm)	70cm	N/A	8mm	N/A	1.8F 0.61mm / 0.024"	2.2F 0.74mm / 0.029"	4F 1.32mm / 0.052"	0.018" (0.46mm)	1



## Precision Wire Placement for Complex Cases

Please see the Instructions for Use for a complete listing of the indications, contraindications, warnings and precautions.

CAUTION: Federal Law (U.S.A.) restricts this device to sale by or on the order of a physician.

U.S. patents pending.

Venture is a registered trademark of Vascular Solutions, Inc.

©2015 Vascular Solutions, Inc. All rights reserved. ML2648 Rev. E 12/15

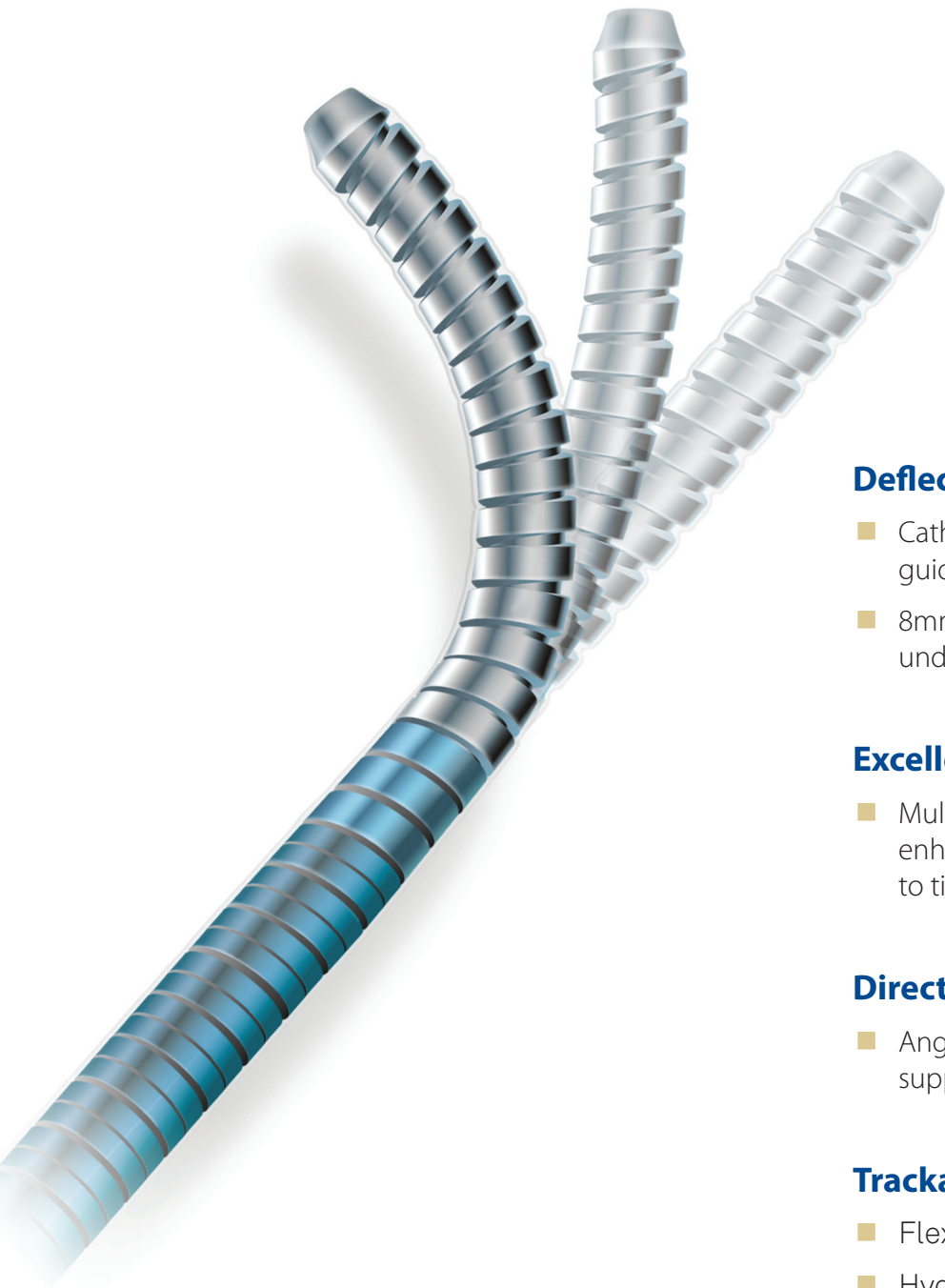


**Vascular Solutions, Inc.**  
6464 Sycamore Court North  
Minneapolis, Minnesota 55369 USA

Customer Service:  
United States: 888.240.6001  
International: (001) 763.656.4298  
customerservice@vasc.com  
www.vasc.com



# The only deflectable tip catheter for guidewire delivery in challenging anatomy



### Deflectable Tip

- Catheter tip deflects up to 90° to direct guidewires around bends and tortuosity
- 8mm platinum tip for excellent visibility under fluoroscopy

### Excellent Torque Response

- Multi-layered coiled torque shaft provides enhanced torque transmission from handle to tip

### Directed Back-Up Support

- Angled tip provides valuable back-up support for crossing tight lesions

### Trackability

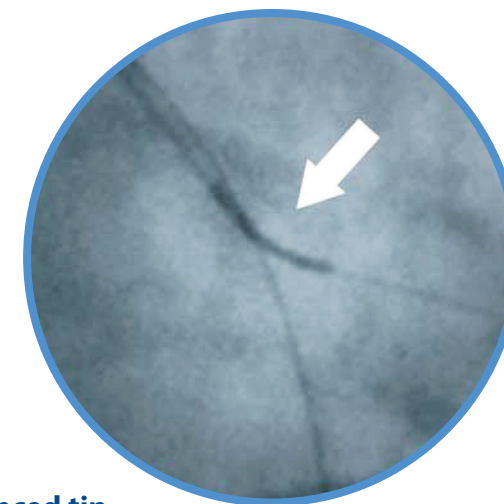
- Flexible, low-profile tip
- Hydrophilic coating improves track performance in tight or challenging anatomy

### Guidewire Compatibility

- Designed to precisely position 0.014" guidewires
- Available in Rapid Exchange, Over-the-Wire and Coronary Sinus versions

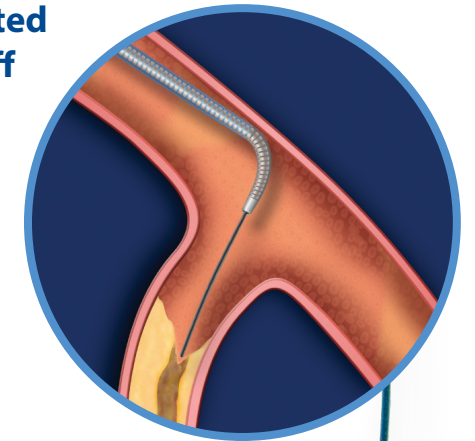
### When to Use Venture

- Angulated take-offs
- Tortuous anatomy
- Stent-jailed side branches
- Tight lesions

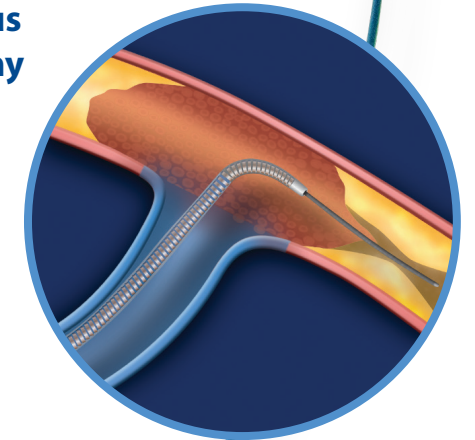


**Enhanced tip visualization promotes accurate positioning**

### Angulated Take-Off



### Tortuous Anatomy



### Stent-Jailed Side Branch

